

T 6 N

R 3 W



**Office of the Monroe County Surveyor**  
**Trohn Enright-Randolph**

---

Health Services Building  
119 West 7<sup>th</sup> Street  
Bloomington, IN 47404  
Phone: (812) 349-2570

Dear User,

The following images were obtained in 2017 by the Office of the Monroe County Surveyor from the State Imaging and Microfilm Laboratory at the Indiana State Archives. The field notes and plats for Greene County are stored on microfilm Reel 4660 at the Indiana State Archives. Each page provided by the State Imaging and Microfilm Laboratory is approximately 18MB. Our office combined the pages by Township & Range and reduced the resulting pdfs. This process may have caused some degradation in quality. We will provide unreduced images of specific pages if required. Please contact us at 812-349-2570 or at [SurveyorsOffice@co.monroe.in.us](mailto:SurveyorsOffice@co.monroe.in.us) to request a higher quality image of any specific page.

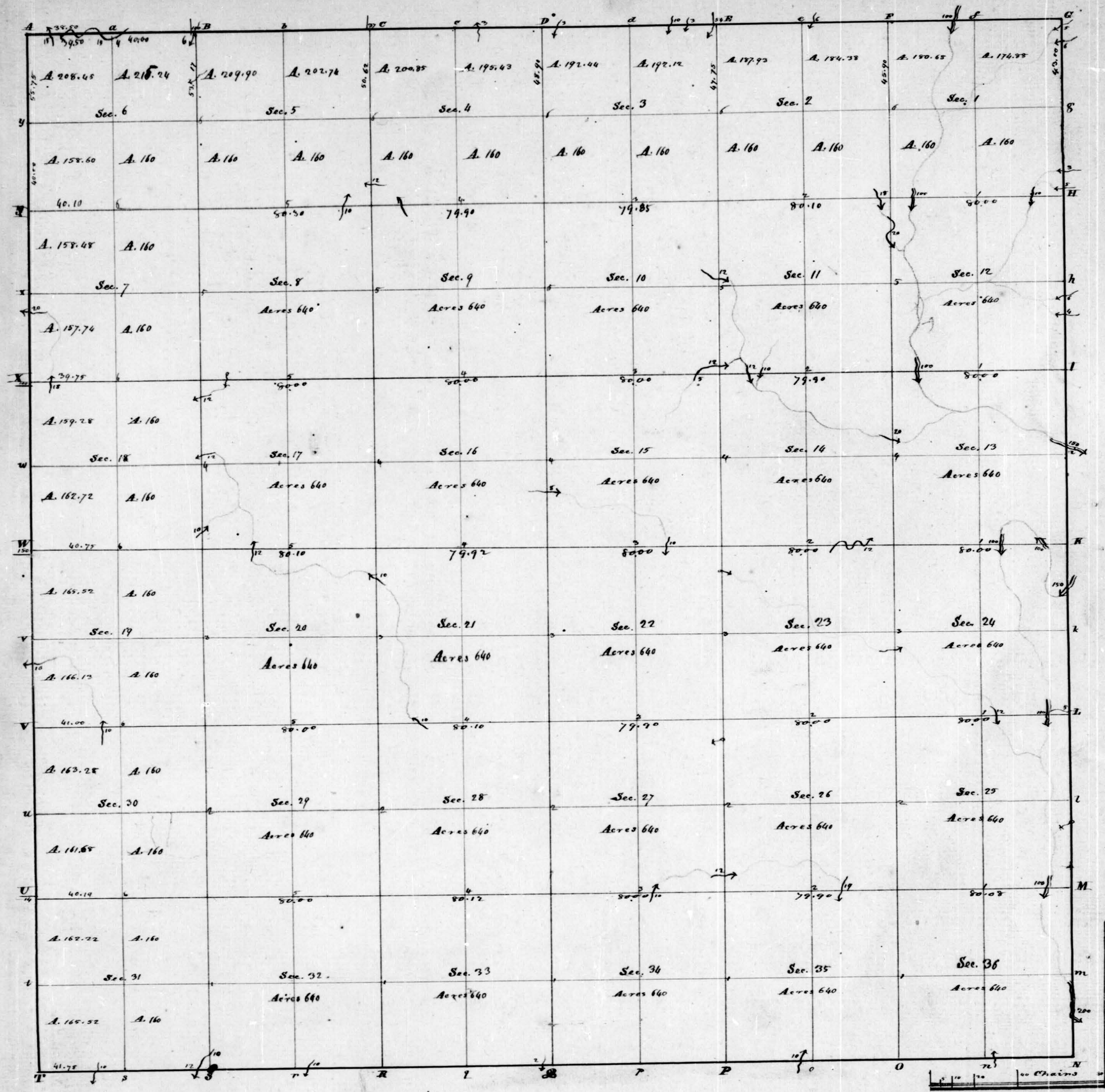
The pdfs are bookmarked with the original page numbers as assigned by the State Imaging and Microfilm Laboratory.

Be prepared to provide the county name, reel number, and the required page numbers when requesting full sized images.

If you would like a DVD of an entire county, please provide us with one DVD per county along with a self-addressed, stamped envelope.

Trohn Enright-Randolph  
Monroe County Surveyor





Township No. VI North, Range No. III West of the 2nd Meridian. Surveyed by Arthur Henrie

Description of the Soil on the interior Sectional lines.

between Sections	Quality &c	between Sections	between Sections
35.36	Land Hilly rich soil - Timber Oak, Hickory, Poplar & Ash &c	15.16	Land Hilly - Timber Oak & Hickory
36.25	ditto	14.15	ditto
25.26	ditto	11.14	ditto
24.25	Land very Hilly - Timber Oak, Hickory & Beech	10.11	Land Rolling - Timber Oak & Hickory very brushy
23.24	ditto	9.10	ditto
13.14	ditto	8.9	ditto
12.13	ditto	7.8	ditto
11.12	ditto	6.7	ditto
1.12	ditto	5.6	ditto
1.2	ditto	4.5	ditto
34.35	Land ditto	33.34	ditto
26.27	ditto	28.29	ditto
25.26	ditto	27.28	ditto
23.24	ditto	26.27	ditto
14.25	Land Rolling - Timber Oak & Hickory - Maple, Dogwood Oak &c	20.21	Land Hilly - Timber Oak & Hickory
22.23	ditto	16.17	ditto
33.34	Land Hilly - Timber Oak & Hickory	15.16	ditto
27.28	ditto	14.15	ditto
26.27	ditto	13.14	ditto
25.26	ditto	12.13	ditto
24.25	ditto	11.12	ditto
23.24	ditto	10.11	ditto
22.23	ditto	9.10	ditto
21.22	ditto	8.9	ditto
20.21	ditto	7.8	ditto
19.20	ditto	6.7	ditto
18.19	ditto	5.6	ditto
17.18	ditto	4.5	ditto
16.17	ditto	3.4	ditto
15.16	ditto	2.3	ditto
14.15	ditto	1.2	ditto
13.14	ditto	0.1	ditto
12.13	ditto		
11.12	ditto		
10.11	ditto		
9.10	ditto		
8.9	ditto		
7.8	ditto		
6.7	ditto		
5.6	ditto		
4.5	ditto		
3.4	ditto		
2.3	ditto		
1.2	ditto		
0.1	ditto		



319

Township N. 6. North of Range N. 3 West 2nd Mer. Ind.  
Ch. 16.

17

South Boundary

East On a Random line On the South Boundary of sec. 31.  
T6. N. R. 3 W.

21.77 To a Brook 10 miles wide, Course S.

40.00 Set a temporary 7/4 eu post.

41.50 To a Brook 12 miles wide, Course S.W.

80.00 Set a temporary post for the cor. of sec. 31 & 32.  
Land is Hilly Timber Oak, & Hickory.

East On a Random line On the South Boundary of sec. 32.  
T6. N. R. 3 W.

40.00 Set a temporary 7/4 eu post.

41.00 To a Brook 10 miles wide, Course S.W.

80.00 Set a temporary post for the cor. of sec. 32 & 33.  
Land is Hilly Timber Oak & Hickory.

East On a Random line On the South Boundary of sec. 33.  
T6. N. R. 3 W.

40.00 Set a temporary 7/4 eu post.

41.50 To a Brook 12 miles wide, Course S.E.

80.00 Set a temporary post for the cor. of sec. 33 & 34.  
Land is the same as last mile.

East On a Random line On the South Boundary of sec. 34.  
T6. N. R. 3 W.

40.00 Set a temporary 7/4 eu post.

80.00 " " " post for the cor. of sec. 34 & 35.  
Land is the same.

East On a Random line On the South Boundary of sec. 35.  
T6. N. R. 3 W.

35.50 To a Brook 10 miles wide, Course N.

40.00 Set a temporary 7/4 eu post.



## T. &amp; C. N. R. No 377 2nd Mer. Ind.

80.00 Set a temp. post for the cor. of sec. 35 & 36.  
Same as the same.

East On a random line On the South Boundary of sec. 36.  
T. & C. N. R. 377.

40.00 Set a temp. post on the line.

41.00 To a watercourse. N.

81.78 Intersect the N. & S. line South of the post cor. of sec. 35.  
5.46 N. R. 377.  
Same as the same.

West On the line between Sec. 36 & 1. T. & C. N. R. 377.  
" " " On the South Boundary of sec. 36.  
T. & C. N. R. 377. N. 7° 15' E.

40.00 Set the temp. post on the line from which,  
Shumaker, 8 in dist. from. S 39° 11' 21" E. dist. 70  
Do 8 " " S 29° 11' 12" E.

80.00 Set the temp. post on the line from the cor. of sec.  
35 & 36. From which,  
Poplar, 7 in dist. from. N 60° E. 24 links dist. 70  
Sage, 10 " " S 33° 11' 28" E.

West On the line On the South Boundary of sec. 35.  
T. & C. N. R. 377.

40.00 Set the temp. post on the line from which,  
Oak, 12 in dist. from East 33 links dist. 70  
Sage, 8 " " " "

80.00 Set a post for the cor. of Sec. 34 & 35. on the line from  
which, Oak 12 in dist. from. N 44° E. 17 links dist.  
and a Nick 8 " " West " "

West On the line On the South Boundary of sec. 33.  
T. & C. N. R. 377.

## T. &amp; C. N. R. No 377 2nd Mer. Ind.

40.00 Set the temp. post on the line from which,  
Doubtful Gum, 12 in dist. from. S 67° E. 34 links dist. 80  
Dogwood 6 " " N 10° 11' 5" E.

80.00 Set a post temp. on the line from the cor. of sec. 33  
& 34. From which,  
Oak, 12 in dist. from. S 75° E. 31 links dist. 70  
Do. 12 " " S 36° 11' 6" E.

West On the line On the South Boundary of sec. 34.  
T. & C. N. R. 377.

40.00 Set the temp. post on the line from which,  
Oak 10 in dist. from. S 68° E. 14 links dist. 70  
Dogwood 6 " " N 35° 11' 5" E.

80.00 Set the temp. post on the line from the cor. of sec. 33  
& 34 from which,  
Oak, 12 in dist. from. S 84° E. 26 links dist. 70  
Do " " " N 16° 11' 5" E.

West On the line On the South Boundary of sec. 32.  
T. & C. N. R. 377.

40.00 Set the temp. post on the line from the cor. of sec.  
from which, Oak, 12 in dist. from. N 27° E. 15 links dist.  
and a Nick 8 " " S 48° E. 11 " "

80.00 Set the temp. post on the line from the cor. of sec. 32  
& 33 from which,  
Gum 6 in dist. from. S 84° E. 5 links dist. 80  
Oak 10 " " S 30° 11' 19" E.

West On the line On the South Boundary of sec. 31.  
T. & C. N. R. 377.

40.00 Set the temp. post on the line from which,  
Oak 12 in dist. from. S 73° E. 15 links dist. 70  
Nick 12 " " N 50° E. 43 " "



81.78 To the post cr. of T. 586. N. R. 384 W.  
Surveyed by A. Harris, D.S.

### East Boundary.

April 5, 1811. Run a Random line South between  
T. 586. Range. 243. W. 6 miles 3 chs. Fall 1811. W.  
of Harris' Town. Sec.

North On the East Boundary of sec 36 T. 6 N. R. 3 W.  
21.00 To a Brook 200 yards wide, corner Sec.

Kept up the Creek. near the Middle.

39.00 Left the Creek to the West.

40.00 Set a 74 su post from which  
Beck. 14 in dist. from. Set 7. 16 links dist. to  
Buckeye. 8 " " " N 44 E 5 " "

60.00 To a W Oak. 24 in dist. in the line.

80.00 Set a post for the cor. of sec. 25 T. 586 from which  
Beck. 36 in dist. from. S 85 W. 14 links dist. to  
Do. 14 " " " S 81 E 20 " "  
April 6, 1811.

North On the East Boundary of sec. 25 T. 6 N. R. 3 W.

30.00 To a spring corner W.

40.00 Set a 74 su post from which  
Sec. 30 in dist. from. S 72 E 10 links dist. to  
Beck. 18 " " " N 47 W 24 " "

64.50 To a Brook. 10 in dist. in the line.

80.00 Set a post for the cor. of sec. 24 T. 586 (from which)  
An Elm. 16 in dist. from. S 25 E 4 links dist. to  
Sugar. 16 in dist. from. S 84 W 15 " "  
Sends ends timber same as last mile.

North On the East Boundary of sec. 24 T. 6 N. R. 3 W.

2.00 To a Brook 5 links wide, corner W.

16.50 To a W Oak 18 in dist. in the line

40.00 Set a 74 su post from which  
W Oak. 36 in dist. from. N 41 E 22 links dist. to  
Beck. 15 " " " S 43 W 33 " "

62.00 To a Brook. 150 yards wide, corner W.

80.00 Set a post for the cor. of sec. 13 T. 586 from which  
Elm. 16 in dist. from. N 37 W. 25 links dist. to  
Sugar. 9 " " " S 7 E 50 " "  
Sends Nelly timber Oak &c.

North On the East Boundary of sec. 13 T. 6 N. R. 3 W.

5.00 To a Spring corner W.

40.00 Set a 74 su post from which  
Beck. 12 in dist. from. S 68 E 10 links dist. to  
Sugar 16 " " " N 48 W 8 " "

44.00 To a Brook 150 yards wide, corner Sec.

50.00 To a cherry. 36 in dist. in the line.

80.00 Set a post for the cor. of sec. 12 T. 586 from which  
Sugar. 16 in dist. from. S 77 W 9 links dist. to  
Beck. 6 " " " N 15 E 28 " "  
Sends good; timber Sugar, Beck, & Oak.

North On the East Boundary of sec. 12 T. 6 N. R. 3 W.

25.00 To a Brook 4 links wide, corner W.

30.00 " " " " " " " " " " " "

40.00 Set a 74 su post from which  
Beck. 9 in dist. from. S 27 W. 11 links dist. to  
Nelly 12 " " " N 40 W 11 " "

80.00 Set a post for the cor. of sec. 18 T. 586 from which  
Beck. 8 in dist. from. N 49 E 3 links dist. to  
Do. 6 " " " S 5 W 16 " "  
Sends Nelly timber Oak.

North On the East Boundary of sec. 1 T. 6 N. R. 3 W.



## T. N. C. N. R. No 3 W. 2nd Mer. Ind.

- Anth On the East Boundary of sec. 1. T. 6 N. R. 3 W.  
 4.00 To a Brook 5 links wide, corner N.  
 10.00 To a No. 34 " " S.W.  
 40.00 Set a post from which  
 W Oak. 12 in dia. beam. N 46 W. 7 links dist; 8 a  
 Sugar. 14 " " " S 9 E. 17 " "  
 49.00 To a Brook. 6 links wide, corner W.  
 81.00 " " No. 5 " " " S.W.  
 83.00 Fell 15 ch. East of the temp. post & moved it to  
 the cor. of Sec. 6 & 7. T. 6 N. R. 3 W. from which  
 W Oak. 40 in dia. beam. S 20 W. 21 links dist; 8 a  
 Sugar. 14 " " " N 5 W. 39 " "  
 Sand & Silty Limb Oak.

## North Boundary

29

- West On the South Boundary of sec. 36. T. 7 N. R. 3 W.  
 40.00 Set a post from which  
 W Oak. 8 in dia. beam. S 65 E. 8 links dist; 8 a  
 W Oak. 20 " " " N 45 W. 26 " "  
 50.00 To a Brook. 100 links wide, corner S.  
 80.00 Set a post for the cor. of sec. 35 & 36. from which  
 Buck. 12 in dia. beam. S 29 E. 9 links dist; 8 a  
 Sugar. 12 " " " N 5 W. 37 " "  
 Silty, Green Oak, Sand.

- West On the South Boundary of sec. 35. T. 7 N. R. 3 W.  
 38.00 To a Brook. 6 links wide, corner S.  
 40.00 Set a post from which  
 Dogwood 4 in dia. beam S 57 E. 14 links dist; 8 a  
 Buck 4 " " " " N 81 W. 20 " "  
 80.00 Set a post for the cor. of sec. 34 & 35 in a spring running  
 S. from which  
 Buck 14 in dia. beam S 50 E. 11 links dist; 8 a

## T. N. C. N. R. No 3 W. 2nd Mer. Ind.

Buck. 9 in dia. beam. N 63 W. 20 links dist;  
 Good hard Oak Limb.

- West On the line between Sec. 34 & 35. T. 6 N. R. 3 W.  
 " " " " On the South Boundary of sec. 34.  
 T. 7 N. R. 3 W.  
 15.00 To a Brook 3 links wide, corner S.  
 20.00 " " No. 10 " " " S.E.  
 40.00 Set a post from which  
 W Oak. 24 in dia. beam. N 53 W. 20 links dist; 8 a  
 No. 18 " " " S 74 E. 43 " "  
 40.00 To a Brook 3 links wide, corner S.  
 80.00 Set a post for the cor. of sec. 33 & 34. from which  
 Hick. 18 in dia. beam. N 6 W. 13 links dist; 8 a  
 W Oak. 16 " " " N 73 E. 23 " "  
 Silty Oak, Sand.

- West On the South Boundary of sec. 33. T. 7 N. R. 3 W.  
 25.00 To a Brook 3 links wide, corner N.  
 28.75 To a Poplar, 36 in dia. in the line.  
 40.00 Set a post from which  
 Hick. 18 in dia. beam. S 65 W. 9 links dist; 8 a  
 Poplar. 9 " " " N 77 E. 19 " "  
 80.00 Set a post for the cor. of sec. 32 & 33. from which  
 Hick. 18 in dia. beam. N 46 E. 16 links dist; 8 a  
 Buck. 12 " " " S 30 E. 20 " "  
 Sand & same as last mile.

- West On the South Boundary of sec. 32. T. 7 N. R. 3 W.  
 34.00 To a Brook. 24 in dia. in the line.  
 40.00 Set a post from which  
 Ash. 6 in dia. beam S 57 W. 14 links dist; 8 a  
 No. 7 " " " " N 62 E. 17 " "



## T. N. 6. N. R. N. 37. 2nd Mer. Ind.

April 8. 1811.

80.00 Set apart for the cor. of sec. 31 & 32 from which  
Sugar 12 in dia. beam. S 19 N. 40 links dist; & a  
Do. 9 " " " N 23 E. 38 " "  
Grass Oak Land.

West On the South Boundary of sec. 31. T. 6. N. R. 37. N.  
0.10 To a Brook 6 links wide, corner N.W.

35.00 " " Do. 4 " " " " "

40.00 Set a 74 support from which  
Oak 24 in dia. beam. S 29 N. 8 links dist; & a  
Sugar 9 " " " N 23 E. 32 " "

44.00 To a Brook 25 links wide, corner N.W.

48.00 " " Do. " " " " " "

53.00 " " Do. " " " " " "

60.00 " " Do. " " " " " "

68.00 " " Do. " " " " " "

80.00 Set a temporary post and mint in each of the Range line  
but could not find it; S. 68 N. R. 38 N.  
Hilly Timber Oak.

Surveyed by  
Alexander Holmes  
Depy Sur.

## West Boundary.

I. 16

North On the East Boundary of sec. 36. T. 6. N. R. 4 N. r 63 N. E

40.00 Set a 74 support from which  
Logwood 7 in dia. beam. S 4 N. 40 links dist; & a  
Nicky 10 " " " N 38 N. 14 " "

80.00 Set apart for the cor. of sec. 25 & 36 from which  
Oak 18 in dia. beam. N 7 E. 13 links dist; & a  
Oak 8 " " " S 64 E. 10 " "  
Sound land Timber Oak & Nicky

## T. N. 6. N. R. N. 37. 2nd Mer. Ind.

North On the East Boundary of sec. 25. T. 6. N. R. 4 N.

40.00 A Gum 10 in dia. stands for the cor. of 7th sec.

61.10 To a Oak 30 in dia. with the min.

80.00 Set apart for the cor. of sec. 24 & 25 from which  
" 23 links dist; & a

N Oak 20 in dia. beam. N 17 N. 37 links dist;

Sound Rolling Timber Oak & Nicky for the 80th

North On the East Boundary of sec. 24. T. 6. N. R. 4 N.

28.50 To a Brook 10 links wide, corner N.

40.00 Set a 74 support from which

Nicky in dia. beam. N 53 N. 28 links dist; & a

Do. 9 " " " S 4 N. 42 " "

80.00 Set apart for the cor. of sec. 13 & 24 from which  
Gum 7 in dia. beam. S 8 N. 28 links dist; & a

Sugar 7 " " " S 45 E. 11 " "

Sound the same.

North On the East Boundary of sec. 13. T. 6. N. R. 4 N.

40.00 Set a 74 support from which

N Oak 19 in dia. beam. S 41 N. 23 links dist; & a

Do. 18 " " " S 50 E. 15 " "

58.25 To a Gum 18 in dia. with the min.

80.00 Set apart for the cor. of sec. 12 & 13 from which

N Oak 20 in dia. beam. S 6 E. 39 links dist; & a

Do. 10 " " " S 30 N. 29 " "

Sound the same.

North On the East Boundary of sec. 12. T. 6. N. R. 4 N.

28.73 To a Brook 20 links wide, corner N.

40.00 Set a 74 support from which

Sugar 8 in dia. beam. S 20 E. 32 links dist; & a

Poplar 6 " " " N 9 E. 7 " "



## T. N. C. N. R. N. 377. 2nd Mer. Ind.

80.00 Set a post for the cor. of sec. 18 & 12 from which,  
Beck 8 in dist. from. S 28 E 4 1/2 miles dist. 8 a  
Loc. 8 1/2 1/2 N 3 E 28 1/2  
Sound the same but not strong

North On the East Boundary of sec. 1. T. 6. N. R. 377.

23.60 To a Oak. 30 in dist. in the line.

40.00 Set a 1/4 sec post from which,

Oak 7 in dist. from. S 10 E 28 1/2 miles dist. 8 a

Loc. 10 1/2 1/2 S 66 W 5 1/2

47.60 To a Oak. 10 in dist. from in the line.

80.00 Set a post at the distance of 1/2 mile from the South  
Boundary. for the cor. of S. 6 1/2 N. R. 374 W.

Surveyed by

Arthur Henrich.

Depy Sur.

## Subdivisions

North Between Sec. 33 & 36. T. 6. N. R. 377.

40.00 Set a 1/4 sec post from which,

Oak. 6 in dist. from. N 2 E 37 1/2 miles dist. 8 a

Dogwood 6 1/2 1/2 N 44 W 17 1/2

80.00 Set a post for the cor. of sec. 25, 26, 33 & 36 from which,

Nick 10 in dist. from. West 56 miles dist. 8 a

Dogwood - 1 1/2 1/2 N 14 E 15 1/2

Sound hills and rich timber Oak, Hick, Poplar,  
Ash, &c.

East. On a Random line between Sec. 25 & 36. T. 6. N. R. 377.

40.00 Set a temp. 1/4 sec post.

70.00 To a Brook. 10 1/2 miles north, Sec. 27.

80.08 Intersect the East Boundary 13 miles North of the post  
cor. of sec. 25 & 36. Sound the same.

## T. N. C. N. R. N. 377. 2nd Mer. Ind.

West On the line between Sec. 25 & 36. T. 6. N. R. 377.

40.04 Set the temp. 1/4 sec post at the cor. dist. in the line  
from which, Beck 20 in dist. from. N 78 W 50 miles dist.  
and a Oak. 20 1/2 1/2 S 4 E 34 1/2

80.08 To the post cor. of sec. 25, 26, 33 & 36.

North Between Sec. 23 & 26. T. 6. N. R. 377.

40.00 Set a 1/4 sec post from which,

Beck. 10 in dist. from. North 17 1/2 miles dist. 8 a

Sugar. 9 1/2 1/2 S 57 W 11 1/2

80.00 Set a post for the cor. of sec. 23, 24, 25 & 26 from which,

Oak. 20 in dist. from. S 44 W 28 miles dist. 8 a

Dogwood 6 1/2 1/2 S 65 E 16 1/2

Sound the same as last mile.

East On a Random line between Sec. 24 & 25. T. 6. N. R. 377.

40.00 Set a temp. 1/4 sec post.

46.00 To a Brook. 12 miles north, Sec. 26.

72.00 " " Loc. 100 1/2 1/2 " "

80.20 Intersect the East Boundary 10 miles South of the  
post cor. of sec. 24 & 25.

Sound very rich timber Oak, Hick, & Beck,

West On the line between Sec. 24 & 25. T. 6. N. R. 377.

40.10 Set the temp. 1/4 sec post at the cor. dist. in the line  
from which,

Sugar. 10 in dist. from. S 87 W 150 miles dist. 8 a

Beck 20 1/2 1/2 West. 53 1/2

80.20 To the post cor. of sec. 23, 24, 25 & 26 from

North Between Sec. 23 & 24. T. 6. N. R. 377.

32.00 To a Brook. 12 miles north, Sec. 26.

40.00 Set a 1/4 sec post from which,



T. No 6 N. R. No 377 2<sup>nd</sup> Mer. Ind.

- 40.00 Set a 7/8 support from which,  
 Gum. 12 in dist. from. N 9 E. 36 links dist; 8 a  
 N Oak. 20 " " " S 67 N 8 " "
- 49.00 To a N Oak. 18 in dist. in the m.
- 80.00 Set a post for the cor. of Sec. 13 14 23 24 from which,  
 Gum. 12 in dist. from. S 49 E. 15 links dist; 8 a  
 Buck. 10 " " " N 44 N. 7 " "  
 Same the same.

- East Quakamam line between Sec. 13 & 24 T. 6 N. R. 377
- 40.00 Set a temporary post
- 50.00 To a Brook 100 links north, corner S.
- 66.00 To the same 100 " " " N.
- 80.00 Intersect the N & S line on East Boundary 12 links  
 South of the post cor. of sec. 13 & 24  
 Same the same.

- West On the line between Sec. 13 & 24 T. 6 N. R. 377
- 40.00 Set the temporary post at the cor. on the line between  
 from which, Sugar. 8 in dist. from. N 80 E. 9 links dist  
 Maple. 10 " " " S 30 N 18 " "
- 80.00 To the post cor. of sec. 13 14 23 & 24

- North Between Sec. 13 & 14 T. 6 N. R. 377
- 40.00 Set a 7/8 support from which,  
 Buck. 10 in dist. from. North 11 links dist; 8 a  
 He. 12 " " " N 49 E. 23 " "
- 49.50 To a Brook 20 links north, corner S.
- 80.00 Set a post for the cor. of sec. 11 12 13 & 14 from which,  
 Sugar. 20 in dist. from. N 21 E. 14 links dist; 8 a  
 N Oak. 10 " " " S 38 E. 2 " "  
 Same the same.

T. No 6 N. R. No 377 2<sup>nd</sup> Mer. Ind.

- East On a line between Sec. 12 & 13 T. 6 N. R. 377
- 12.00 To a Brook 100 links north, corner S.
- 40.00 Set a temporary post.
- 80.00 Intersect the N & S line on East Boundary 43 links North  
 of the post cor. of sec. 12 & 13. Same the same.

- West On the line between Sec. 12 & 13 T. 6 N. R. 377
- 40.00 Set a 7/8 support from which, (on east line)  
 Nicker 10 in dist. from. N 74 N. 9 links dist; 8 a  
 Buck. 7 " " " S 53 E. 9 " "
- 80.00 To the post cor. of sec. 12 & 13. 118 14

- North Between Sec. 11 & 12 T. 6 N. R. 377
- 40.00 Set a 7/8 support from which,  
 Dogwood 6 in dist. from. S 19 E. 26 links dist; 8 a  
 Sugar. 10 " " " N 36 N. 15 " "
- 61.50 To a Brook 20 links north, corner S.
- 66.50 " " " " " " " S.
- 72.00 " " " " " " " S.E.
- 80.00 Set a post for the cor. of sec. 1 2 11 & 12 from which,  
 Sugar. 12 in dist. from. S 42 E. 32 links dist; 8 a  
 Cherry. 12 " " " N 72 N. 4 " "  
 Same Nelly, and rich Iron Buck, Oak, ash &  
 S. Plar.

- East On a line between Sec. 14 & 15 T. 6 N. R. 377
- 15.50 To a Brook 100 links north, corner S.
- 40.00 Set a temporary post.
- 78.00 To a Brook 10 links north, corner S.
- 80.00 Intersect the East Boundary 12 links North of the post  
 cor. of sec. 1 & 12.  
 Same the same.



## I. N.º 6 N. R. N.º 37. 2nd Mer. Ind.

West On the line between Sec. 18 & 19 T. 6 N. R. 37 N.  
40.00 Set the temporary post at the arch on the line from  
whence, Buck 12 in air line. N 79 E. 23 1/2 mts dist  
and a Do 10 4 4 N 62 W. 4 3  
80.00 To the post on of sec. 1, 2, 11 & 12.

North Return Sec 18 & 19 T. 6 N. R. 37 N.  
40.00 Set a 7/8 post from whence  
Buck 12 in air line. Dist 44 1/2 mts  
85.90 Intersect the N Boundary at the post on of sec  
35 & 36 T. 7 N. R. 37 N.  
Sound the same.

North Return Sec 34 & 35 T. 6 N. R. 37 N.  
40.00 Set a 7/8 post from whence  
Poplar 7 in air line. S 52 E. 20 mts east, Ga  
Sum. 10 4 4 S 15 W. 39 4 4  
80.00 Set a post for the on of sec. 26, 27, 34 & 35 from whence  
Sugar 10 in air line. S 57 W. 12 mts east, Ga  
Do 12 4 4 S 37 E. 19 4 4  
Sound the same. Timber Oak & Hickory.

East On a Random line between Sec. 26 & 35 T. 6 N. R. 37 N.  
40.00 Set a temporary post.  
52.00 To a Brook 19 mts wide, corner S.  
79.90 Intersect the NWS line 20 mts South of the post  
on of sec. 25, 26, 35 & 36.  
Sound the same as last mile.

West On the line between Sec. 26 & 35 T. 6 N. R. 37 N.  
39.95 Set the temporary post at the arch on the line from  
whence, Poplar 8 in air line. S 74 W. 28 1/2 mts dist  
and a Hogwood 5 4 4 S 3 E. 19 4 4

## I. N.º 6 N. R. N.º 37 2nd Mer. Ind.

99.90 To the post on of sec. 26, 27, 34 & 35.

North Return Sec 26 & 27 T. 6 N. R. 37 N.  
8.00 To a Brook 12 mts wide, (Co. Co.  
23.00 " " " 12 in air line in the line.  
40.00 Set a 7/8 post from whence  
Oak 10 in air line. S 15 W. 31 mts east, Ga  
Hogwood 7 4 4 S 34 E. 17 4 4  
47.00 To a spring corner W  
80.00 Set a post for the on of sec. 22, 23, 26 & 27 from whence  
Oak 12 in air line. West of the east. Ga  
Poplar 12 4 4 S 71 E. 30 4 4  
Sound the same.

East On a Random line between Sec. 23 & 26 T. 6 N. R. 37 N.  
40.00 Set a 7/8 post temporary.  
80.00 Intersect the NWS line 18 mts North of the post on  
of sec. 23, 24, 25 & 26.  
Sound the same as last mile.

West On the line between Sec. 23 & 26 T. 6 N. R. 37 N.  
40.00 Set the temporary post at the arch on the line from  
whence, Poplar 8 in air line. Sound 8 1/2 mts dist.  
and a Oak 24 4 4 S 74 E. 57 4 4  
80.00 To the post on of sec. 22, 23, 26 & 27.

South On a Random line between Sec. 22 & 23 T. 6 N. R. 37 N.  
9.50 To a Brook 12 mts wide, (Co. Co.  
40.00 Set a temporary post.  
80.20 Intersect the E 87 W 85 mts East of the post on of sec  
22, 23, 26 & 27.  
Sound the same.



West Between Jul. 14 123. S. C. A. R. 371.  
 40.00 Set a post from which  
 Sugar 7 in dia. beam. 80 E. 44 1/2 dist. 80  
 Do. 44 " " 85 1/2 E. 22 " "  
 53.50 To a Brook 12 mts. mid, corner N.E.  
 58.00 " " Same. " " " " S.E.  
 60.00 " " Do. " " " " N.E.  
 66.00 To the N. Bend of the same.  
 80.00 Set a post for the cor. of sec. 14 15, 22 123 from which  
 Oak 20 in dia. beam. East 25 mts. dist. 80  
 Do. 10 " " " 84 1/2 E. 39 " "  
 Sander rolling Timber Oak & Hick  
 N. of Logmoot Oak & Hick

North Between Jul. 14 8 15. S. C. A. R. 371.  
 40.00 Set a post from which  
 Ship post not established  
 80.00 Set a post for the cor. of sec. 10 11, 14 15 from which  
 Oak 12 in dia. beam. N 85 1/2 W. 44 1/2 mts. dist. 80  
 Do. 10 " " " " 144 E. 22 " "  
 Same the same.

East On a Ranam line between Jul. 11 8 14. S. C. A. R. 371.  
 19.50 To a Brook 12 mts. mid. S.E.  
 22.00 " " Do. 10 " " " S.  
 40.00 Set a temp. post.  
 66.50 To a spring corner S.  
 79.90 Intersect the N. 85 line 18 mts. South of the post  
 Cor. of sec. 11 12, 13 14.  
 Same the same, as last mile.

West On the same line between Jul. 11 8 14. S. C. A. R. 371.  
 39.95 Set the temp. post at the cor. on the line

from which - Logmoot 6 in dia. beam. N 85 1/2 W. 39 1/2  
 dist. 80 Hick 10 in dia. beam. N 25 1/2 W. 44 1/2 dist.  
 79.90 To the post cor. of sec. 10 11, 14 15

North Between Jul. 10 8 11. S. C. A. R. 371.  
 1.00 To a Brook 12 mts. mid, corner E.  
 40.00 Set a post from which  
 Sugar 10 in dia. beam. 84 1/2 E. 21 1/2 dist. 80  
 Hick 10 " " " " 135 1/2 W. 8 " "  
 46.50 To a Brook 12 mts. mid, corner S.E.  
 48.50 " " Same. " " " " S.W.  
 80.00 Set a post for the cor. of sec. 2, 3, 10 8 11 from which  
 Poplar 8 in dia. beam. 80 E. 39 1/2 dist. 80  
 Oak 8 " " " " 13 1/2 W. 44 " "  
 Sander rolling Timber Oak & Hick

East On a Ranam line between Jul. 2 11. S. C. A. R. 371.  
 40.00 Set a temp. post.  
 73.50 To a Brook 18 mts. mid, corner S.E.  
 80.10 Intersect the N. 85 line at the post cor. of sec. 1, 2 11 8 12  
 Same the same, as last mile.

West On the same line between Jul. 2 11. S. C. A. R. 371.  
 40.05 Set a temp. post at the cor. on the line from  
 which Maple 8 in dia. beam. 89 E. 19 1/2 dist.  
 Do. Hick 9 " " " " 121 1/2 W. 4 " "  
 80.10 To the post cor. of sec. 2, 3 10 8 11.

North Between Jul. 2 13. S. C. A. R. 371.  
 40.00 Set a post from which  
 Sugar 6 in dia. beam. N 62 E. 44 1/2 dist. 80  
 Oak 36 " " " " S.E. 52 " "  
 87.75 Intersect the N. 85 line at a post Oak 12 in dia. beam.



## T. N. C. N. R. N. 3 M D M. M. Ind.

Hands for the ca of Sur 213. 54 links East of the post  
 ca of sur 34 & 35. T. 7 N R 3 W  
 Same as the same as last mtd.

North Between Sur 33 & 34 T. 6 N R 3 W.  
 40.00 Set a post from which  
 W Oak 12 in diam. base. N 14 E 31 links east, 20  
 W Oak 18 " " N 64 W 15 " "  
 80.00 Set a post for the ca of sur 27 28 33 & 34 from which  
 Logwood 6 in diam. base. S 79 W 32 links east, 8 a  
 flo. 6 " " S 20 W 6 " "  
 Same as the same Timber Oak & Hickory

East On a Random line between Sur 27 & 34 T. 6 N R 3 W.  
 40.00 Set a temporary 74 support.  
 47.00 To a Brook 10 links wide, Sec. N.  
 80.00 Interscut the N 8 S line 14 links South of the post  
 ca of sur 26 27 34 & 35.  
 Same as the same.

West On the line between Sur 27 & 34 T. 6 N R 3 W.  
 40.00 Set the temporary 74 support at the av. dist. in the line  
 from which, W Oak 12 in diam. base. S 120 W 19 links east, 8 a  
 amaga Hickory 10 " " N 17 E 23 " "  
 80.00 To the post ca of sur 27 28 33 & 34

North Between Sur 27 & 28 T. 6 N R 3 W.  
 40.00 Set a temporary support from which  
 W Oak 12 in diam. base. S 37 E 19 links east, 8 a  
 Log. 15 " " S 87 W 35 " "  
 80.00 Set a post for the ca of sur 21 22 27 & 28 from which  
 Hickory 10 in diam. base. S 54 W 11 links east, 8 a  
 W Oak 20 " " S 45 E 23 " "

## T. N. C. N. R. N. 3 M D M. M. Ind. 337

Same as the same.

East On a Random line between Sur 22 & 27 T. 6 N R 3 W.  
 40.00 Set a temporary 74 support  
 49.90 Interscut the N 8 S line 11 links South of the post ca of  
 Sur 22 23 26 & 27.  
 Same as the same.

West On the line between Sur 22 & 27 T. 6 N R 3 W.  
 39.95 Set the temporary 74 support at the av. dist. in the line  
 from which, W Oak 12 in diam. base. S 47 W 63 links  
 ca of sur 21 22 27 & 28.  
 49.90 To the ca of sur 21 22 27 & 28.

North Between Sur 21 & 22 T. 6 N R 3 W.  
 40.00 Set a temporary support from which  
 W Oak 12 in diam. base. N 82 W 20 links east, 8 a  
 W Oak 18 " " S 53 E 13 " "  
 Logwood very bushy  
 80.00 Set a post for the ca of sur 15 16 21 & 22 from which  
 Logwood 6 in diam. base. S 31 E 14 links east, 8 a  
 W Oak 12 " " N 44 W 18 " "  
 Same as the same Timber Oak & Hickory

East On a Random line between Sur 15 & 22 T. 6 N R 3 W.  
 40.00 Set a temporary 74 support.  
 53.50 To a Brook 10 links wide, Sec. N.  
 80.00 Interscut the N 8 S line 20 links South of the post ca.  
 of Sur 14 15 22 & 23.  
 Same as the same.

West On the line between Sur 15 & 22 T. 6 N R 3 W.  
 40.00 Set the temporary 74 support in the line at the av. dist.



T. N. C. N. R. N. 3<sup>rd</sup> Div. Min. Ind.

From which, W Oak 10 in diam. base. S 32 E. 18 lbs dist  
 under Hogwood 7, , , S 51 N. 18, ,  
 80,00 To the post on of ear. 16 15. 21 822.

North Return Sur 15 816. T. C. N. R. 3<sup>rd</sup> Div.  
 20,00 To a Brook 8 miles wide, Leamer &  
 40,00 Set a 74 sup post from which,  
 W Oak 20 in diam. base North 5 miles east, &  
 Hogwood 7, , , N 87 N. 27, , ,  
 80,00 Set a post for the on of ear 9. 10. 13 816. From which,  
 a W Oak, 8 in diam. base. N 64 N. 20 miles east &  
 Poplar. 9, , , S 95 N. 6, , ,  
 Land the same as last mile.

East On a line between Sur 11 815. T. C. N. R. 3<sup>rd</sup> Div.  
 40,00 Set a temp 74 sup post.  
 75.50 To a Brook 5 miles wide, Lee N.  
 80,00 Enter out the N 8 S line 8 miles South of the post on  
 of Sur 10 11. 14 815.  
 Land the same.

West On the same line between Sur 10 815. T. C. N. R. 3<sup>rd</sup> Div.  
 40,00 Set the temp 74 sup post at the on east on the same line.  
 From which, W Oak, 24 in diam. base. N 78 N. 23 lbs  
 dist; & 2, W Oak, 18, , , S 45 N. 16, , ,  
 80,00 To the post on of ear. 9. 10 15 816.

~~North Return Sur 9 010 T. C. N. R. 3<sup>rd</sup> Div.  
 40,00 Set a 74 sup post from which,  
 W Oak 24 in diam. base. N 78 N. 23 miles east, &  
 W Oak, 18, , , S 45 N. 16, , ,  
 80,00 Set a post for the on of ear 3 4 9 010. From which,~~

T. N. C. N. R. N. 3<sup>rd</sup> Div. Min. Ind.

North Return Sur 9 410 T. C. N. R. 3<sup>rd</sup> Div.  
 40,00 Set a 74 sup post from which,  
 W Oak 12 in diam. base. S 52 N. 15 lbs dist, &  
 Poplar. 10, , , S 19 E. 20, , ,  
 57.65 To a W Oak 20 in diam. on the same.  
 80,00 Set a post for the on of ear 3 4 9 410 from which,  
 Poplar. 9 in diam. base. N 57 E. 25 lbs east; &  
 Ho. 10, , , N 39 N. 15, , ,  
 Land the same. Timber Oak & Hickory

East On a line between Sur 3 410. T. C. N. R. 3<sup>rd</sup> Div.  
 40,00 Set a temp 74 sup post.  
 77.85 Enter out the N 8 S line at the post on of ear. 3 7. 10 811  
 Land the same.

West Return Sur 3 410. T. C. N. R. 3<sup>rd</sup> Div.  
 39.92 Set the temp 74 sup post at the on east on the same line.  
 From which, W Oak 20 in diam. base. N 40 N. 15 lbs dist,  
 under Hickory 10, , , S 88 E. 52, , ,  
 79.85 To the post on of ear. 3 4 9 410

North Return Sur 3 84 T. C. N. R. 3<sup>rd</sup> Div.  
 40,00 Set a 74 sup post from which,  
 Poplar 12 in diam. base. South 20 lbs east; &  
 88.90 Enter out the N 8 S line at the post on of ear. 3 3 3 4  
 T. C. N. R. 3<sup>rd</sup> Div.  
 Land the same.

North Return Sur 3 28 33 T. C. N. R. 3<sup>rd</sup> Div.  
 40,00 Set a 74 sup post from which,  
 Hickory 10 in diam. base. N 64 E. 9 lbs east; &  
 W Oak 8, , , S 77 N. 21, , ,  
 67.85 To a Poplar 12 in diam. on the same.



T. N. 6. N. R. N. 3. N. 2. N. N. S. N.

80.00 Set a post for the cor of sec 28, 29, 32 & 33 from which  
W Oak 12 in diam bears. S 46° 11' 59" E 100 yds dist. S. a  
Dogwood 8 " " " S 25° E 43 " "  
Gunde rolling Timber (Oak & Hick).

East On a Random line between Sec 28 & 33. T. 6. N. R. 3. N.  
40.00 Set a temp 7 1/2 cu post.  
S. 1. 12. Intersect the N & S line 18 miles South of the post.  
cu of sec 27, 28, 33 & 34  
Gunde the same.

West On the true line between Sec 28 & 33. T. 6. N. R. 3. N.  
40.00 Set a temp 7 1/2 cu post.  
which, W Oak 20 in diam bears. S 37° 11' 22" E 100 yds dist.  
S. a. Ho 18 " " S 56° E 41 " "  
80.12 To the post cor of sec. 28, 29, 33 & 33.

North Between Sec 28 & 29. T. 6. N. R. 3. N.  
40.00 Set a temp 7 1/2 cu post from which,  
W Oak 10 in diam bears. S 44° E 18 yds dist. S. a.  
Ho. 12 " " S 37° E 28 " "  
80.00 Set a post for the cor of sec. 26, 27, 28 & 29 from which,  
Dogwood 6 in diam bears. S 66° 11' 21" E 100 yds dist. S. a.  
Ho. 6 " " S 40° E 14 " "  
Gunde the same.

East On a Random line between Sec 21 & 28. T. 6. N. R. 3. N.  
20.00 Top Brook 10 miles wide, Sec. N. N.  
40.00 Set a temp 7 1/2 cu post.  
80.10 Intersect the N & S line 16 miles South of the post cor  
of sec 21, 22 & 28.  
Gunde the same.

T. N. 6. N. R. N. 3. N. 2. N. N. S. N.

West On the true line between Sec 21 & 28. T. 6. N. R. 3. N.  
40.00 Set the temp 7 1/2 cu post at the cor dist on the true line from  
which, Hick 10 in diam bears. S 57° 11' 21" E 100 yds dist. S. a.  
W Oak 12 " " S 71° E 9 " "  
80.10 To the post cor of sec. 20, 21, 28 & 29.

North Between Sec 20 & 21. T. 6. N. R. 3. N.  
40.00 Set a temp 7 1/2 cu post from which,  
Sugar 10 in diam bears. S 25° E 100 yds dist. S. a.  
Bleak 4 " " S 22° E 63 " "  
65.00 Top Brook 10 miles wide, Sec. N. N.  
80.00 Set a post for the cor of sec. 16, 17 & 20 & 21 from which,  
W Oak 10 in diam bears. S 40° E 23 yds dist. S. a.  
Sugar 12 " " S 57° 11' 21" E 100 yds dist. S. a.  
Gunde Hilley Timber (Oak & Hick)

East On a Random line between Sec 16 & 21. T. 6. N. R. 3. N.  
40.00 Set a temp 7 1/2 cu post.  
49.92 Intersect the N & S line 12 miles South of the post cor of  
Sec 15, 16, 21 & 22.  
Gunde the same as last mile.

West On the true line between Sec 16 & 21. T. 6. N. R. 3. N.  
39.96 To the temp 7 1/2 cu post at the cor dist on the true line  
from which, B Oak 20 in diam bears. East 20 yds dist,  
and a Hick 10 " " North 7 " "  
49.92 To the post cor of sec. 16, 17 & 20 & 21.

North Between Sec 16 & 17. T. 6. N. R. 3. N.  
40.00 Set a temp 7 1/2 cu post from which,  
W Oak 20 in diam bears. North 79 yds dist. S. a.  
80.00 Set a post for the cor of sec. 8, 9, 16 & 17 from which,  
W Oak 18 in diam bears. S 11° 11' 45" E 100 yds dist. S. a.



T. N. 6. N. R. No. 372<sup>nd</sup> Mm. Ind.

W Oak. 12 in diam. trees. S 37 E. 18<sup>th</sup> dist.  
Sound the same.

East. On a random line between Sec 9 & 16. T. 6. N. R. 37<sup>th</sup>.  
40.00 Set a temporary 7/4 support.  
80.00 Intersect the N 45 line 15 miles North of the post. Co  
of Sec. 9 & 16 N 6.  
Sound the same as last mile.

West. On the line between Sec 9 & 16. T. 6. N. R. 37<sup>th</sup>.  
40.00 Set a temporary support at the ar duct on the true line  
from which, Hickory 12 in diam. trees. S 72<sup>nd</sup> 52<sup>nd</sup> dist.  
W Oak, 12, " " S 35 E. 42<sup>nd</sup>,  
80.00 To the post co of sec 8. 9. 16 & 17.

North. Return Sec 8 & 9. T. 6. N. R. No. 37<sup>th</sup>.  
40.00 Set a temporary support from which,  
W Oak, 20 in diam. trees. South 30 miles dist; S,  
80.00 Set a post for the co of sec 4. 5. 8 & 9 from which,  
W Oak, 12 in diam. trees. N 56 E. 12 miles dist; S,  
Log 10 " " " S 6 N. 11 " "  
Sound the same.

East. On a random line between Sec 4 & 9. T. 6. N. R. 37<sup>th</sup>.  
18.00 To a Brook. corner NW.  
40.00 Set a temporary 7/4 support.  
79.90 Intersect the N 45 line 12 miles North of the post co of  
Sec. 3. 4. 9 & 10  
Sound the same.

West. On the line between Sec 4 & 9. T. 6. N. R. 37<sup>th</sup>.  
39.95 Set the temporary support at the ar duct on the true line  
from which, Log woods 6 in diam. trees. S 74 E. 19<sup>th</sup> dist.

T. N. 6. N. R. No. 372<sup>nd</sup> Mm. Ind.

Ch. 67  
79.90 Gum. 18 in diam. trees. N 42<sup>nd</sup> 23<sup>rd</sup> dist; S,  
To the co of sec. 4. 5. 8 & 9

North. Return Sec 4 & 5. T. 6. N. R. 37<sup>th</sup>.  
11.00 To a Brook. 10 miles north, corner NW.  
40.00 Set a temporary support from which,  
Log woods 6 in diam. trees. N 53 E. 6<sup>th</sup> dist; S,  
W Oak, 10 " " " S 44 E. 4 " "  
90.00 Intersect the N 45 line 31 miles East of the post co  
of sec 32 & 33. T. 6. N. R. 37<sup>th</sup>. and set a post for the  
co of sec 4 & 5 from which,  
Wood 12 in diam. trees. S 68<sup>th</sup> 24<sup>th</sup> dist; S a  
Log woods 4 " " " S 74 E. 11 " "  
Sound the same.

North. Return Sec 31 & 32. T. 6. N. R. 37<sup>th</sup>.  
6.50 To a Brook. 10 miles north, corner NW.  
40.00 Set a temporary support from which,  
W Oak, 20 in diam. trees. N 56 E. 23<sup>rd</sup> dist; S,  
Hickory 7 " " " N 77 E. 6 " "  
80.00 Set a post for the co of sec 29. 30. 31 & 32 from which,  
Gum. 8 in diam. trees. S 29<sup>th</sup> 30<sup>th</sup> dist; S,  
W Oak, 20 " " " N 36 N. 29 " "  
Sound the same. Timber Oak, & Hickory

East. On a random line between Sec 29 & 32. T. 6. N. R. 37<sup>th</sup>.  
40.00 Set a temporary support.  
80.00 Intersect the N 45 line 10 miles North of the post  
co of sec 28. 29. 32 & 33.  
Sound the same.

West. On the line between Sec 29 & 32. T. 6. N. R. 37<sup>th</sup>.  
40.00 Set a temporary support at the ar duct on the true line  
from which, Poplar 12 in diam. trees. S 74 E. 18<sup>th</sup> dist; S



From which, W Oak. 9 in dist. from S84E 20 W dist.  
80.00 To the post on of our 29.30.31 1832.

West Return Dec 30 1831 T. 6. N. R. 37.  
18.75 To a W Oak. 10 in dist. in the m.  
40.00 Set a 7/8 cup post from which,  
W Oak. 20 in dist. from. S70 W 8 W dist. of a  
Logwood 7. 159 E. 8. 1.  
80.91 Intercept the West Boundary 14 miles South of the post  
on of our 25 1836 T. 6. N. R. 37. and set a post for  
" " 30 1831 from which,  
W Oak. 9 in dist. from. S43 E 10 W dist. of a  
Logwood 7. 140 E. 35. 1.  
Sands rolling Timber Oak, Hickory

North Return Dec 29 1830 T. 6. N. R. 37.  
7.40 To a W Oak. 20 in dist. in the m.  
40.00 Set a 7/8 cup post from which,  
W Oak. 12 in dist. from. S21 E 14 W dist. of a  
Logwood 7. 14 E. 37. 1.  
80.00 Set a post for the on of our 19 20 29 1830 from  
which, W Oak. 12 in dist. from. S10 E. 19 W dist.  
and on 10. 10. 1. 138 E. 45. 1.  
Sands brushy Thin Soil. Hilky

East On a Random line between Dec 30 1829 T. 6. N. R. 37.  
40.00 Set a temp 7/8 cup post.  
80.00 Set out the N. 37 line 12 miles North of the post on  
of our 20. 21 1829.  
Sands the same select mts.

West On the same line between Dec 20 1829 T. 6. N. R. 37.  
40.00 Set the temp 7/8 cup post at the on dist. on the line  
from which, W Oak. 6 in dist. from. S44 E. 15 W dist.

from which, Logwood 6 in dist. from. S25 W. 7 W dist.  
on a W Oak. 6. 1. 1. 188 W 22. 1.  
80.00 To the post on of our 19. 20. 29 1830.

West Return Dec 19 1830 T. 6. N. R. 37.  
40.00 Set a 7/8 cup post from which,  
W Oak. 18 in dist. from. S24 E 5 W dist. of a  
Do. 1. 1. 1. 174 W. 23. 1.  
46.50 To a Brook. 10 miles north, corner N.  
33.10 To a W Oak. 12 in dist. in the m.  
81.00 Intercept the West Boundary at the post on of our 24 18  
25. T. 6. N. R. 47.  
Sands the same.

North Return Dec 19 1820 T. 6. N. R. 37.  
29.50 To a W Oak. 12 in dist. in the m.  
40.00 Set a 7/8 cup post from which,  
W Oak. 10 in dist. from. S19 E 31 W dist. of a  
Hickory 7. 14 E. 12. 1.  
80.00 Set a post for the on of our 17. 18. 19 1820 from which,  
W Oak. 24 in dist. from. S35 E. 45 W dist. of a  
W Oak. 12. 1. 1. 137 W. 25. 1.  
Sands the same select mts.

East On a Random line between Dec 17 1820 T. 6. N. R. 37.  
28.00 To a Brook. 12 miles north, corner N.  
40.00 Set a 7/8 cup post temp 7/8  
80.10 Intercept the N. 37 line at the post on of our 16. 17  
20 1821. Sands the same.

West On the same line between Dec 17 1820 T. 6. N. R. 37.  
40.00 Set the temp 7/8 cup post at the on dist. on the line  
from which, W Oak. 6 in dist. from. S44 E. 15 W dist.







